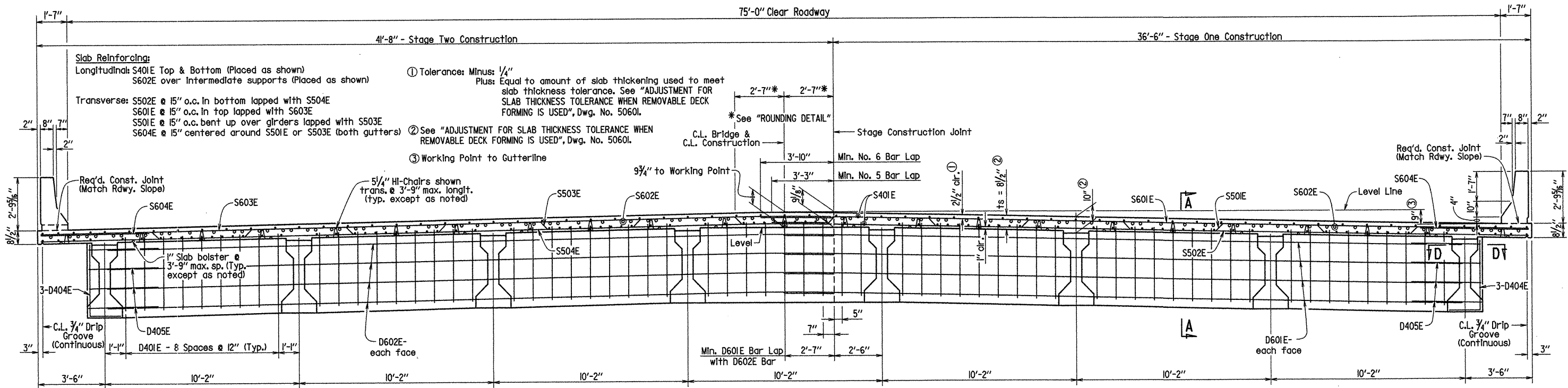


Note: At the Contractor's option, two straight epoxy-coated #5 bars may be substituted for bar S501E or bar S503E. Payment for reinforcing will be based on the weight of bar S501E or S503E.

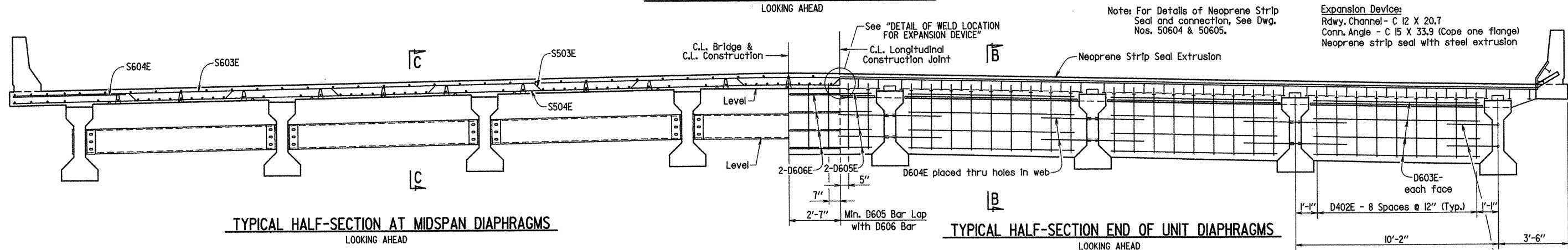
Note: The superstructure details shown are for use when removable deck forming is used and are the basis for measurement of Class S(AE) Concrete.

Note: Class I Protective Surface Treatment shall be applied to the Roadway Surface and to the face and top of the Concrete Parapet Rail.

DATE REVISED	DATE FILMED	DATE REVISED	DATE FILMED	FED. ROAD DIST. NO.	STATE	FED. AID PROJ. NO.	SHEET NO.	TOTAL SHEETS
				6	ARK.			
				JOB NO.		040487	88	200
				07154		SPAN DETAILS		50599

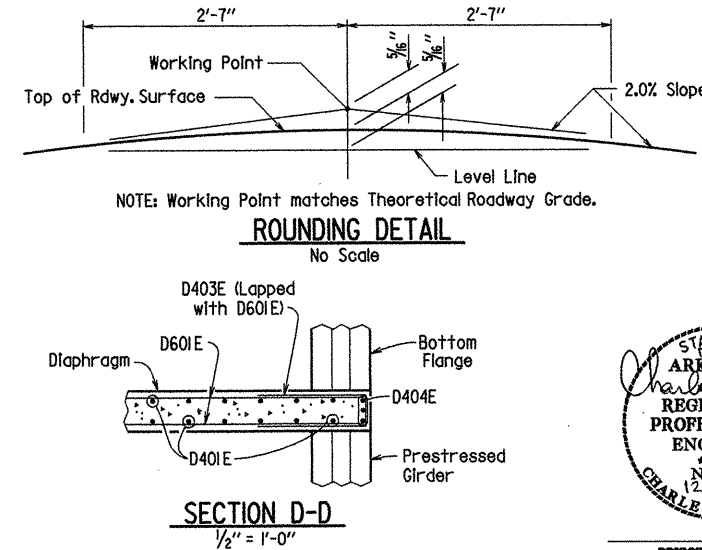
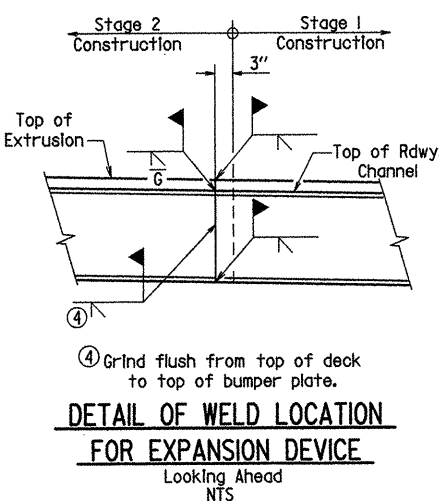
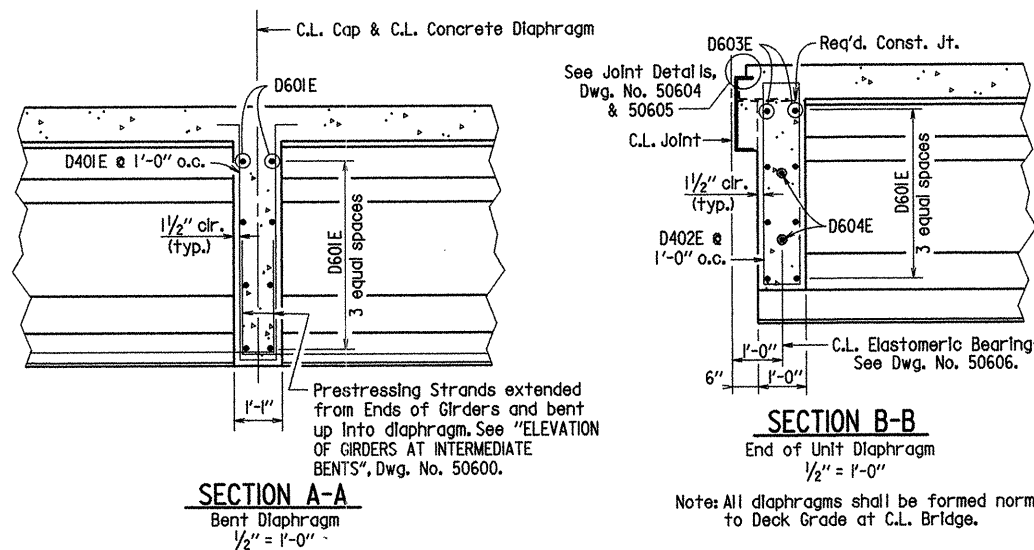


TYPICAL SECTION AT INTERMEDIATE BENTS



TYPICAL HALF-SECTION AT MIDSPAN DIAPHRAGMS

TYPICAL HALF-SECTION END OF UNIT DIAPHRAGMS



- ④ Galvanized Threaded Inserts & 3/4" x 3'-6" Threaded Rods @ Exterior Girders (See End Bent Bearing Details on Dwg. No. 50600 for number and location)
- ④ Note: Galvanized Threaded Inserts shall be Dayton-Richmond F-42 Loop Ferule Inserts or approved equal, 3/4" x Galvanized Threaded Rods shall be AASHTO M 270, Grade 36 or AASHTO M 31 or M 53, Grade 60. Galvanizing shall be in accordance with AASHTO M 232, Class C or AASHTO M 298, Class 50. These items will not be paid for directly, but shall be considered subsidiary to the item "Prestressed Concrete Girders (Type III)".

SHEET 1 OF 7
DETAILS OF 350'-0" PRESTRESSED
CONCRETE GIRDER UNIT
VACHE GRASSE CREEK
ROUTE 22 SEC. 1
ARKANSAS STATE HIGHWAY COMMISSION
LITTLE ROCK, ARK.

DRAWN BY: MJT DATE: 01-15-09 FILENAME: B040487X1.SLDGN
CHECKED BY: JGT DATE: 9-18-09 SCALE: 3/8" = 1'-0" OR AS NOTED
DESIGNED BY: DBS DATE: 10/08
BRIDGE NO. 07154 DRAWING NO. 50599

